

# VMA-FS AND ASSOCIATED PARTS

## MATEABLE BULKHEAD CONNECTORS

### BULKHEAD CONNECTORS & MOUNTING REQUIREMENT

(MATES TO VMA-FS & VMA-FS-R/A & VMA-FS SL)

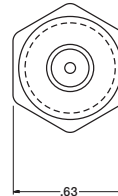
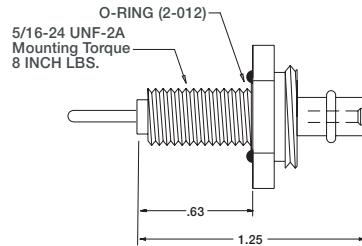
Dummy Connector: VMA-FS D HP or VMA FS D LP

Part Name: **VMA-BCL**

Material: 316 Stainless St., Internal Insulation-Special Neoprene

Contacts: Copper Alloy, Hard Gold Plated per ASTM-B-488

Pressure Rating, Mated: up to 20,000 psi



VMA-BCL  
1#16  
600VDC

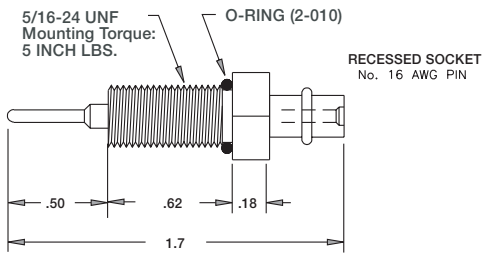
Part Names: **VSA-BC, VSA-BCL, VSB-BCL**

Material: Glass Reinforced Epoxy

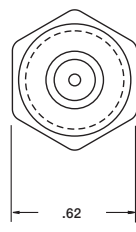
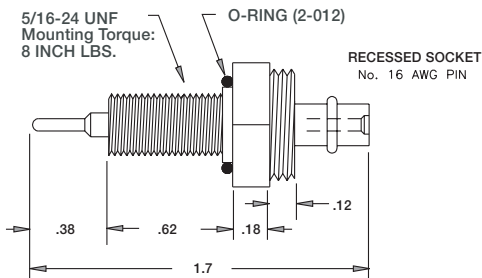
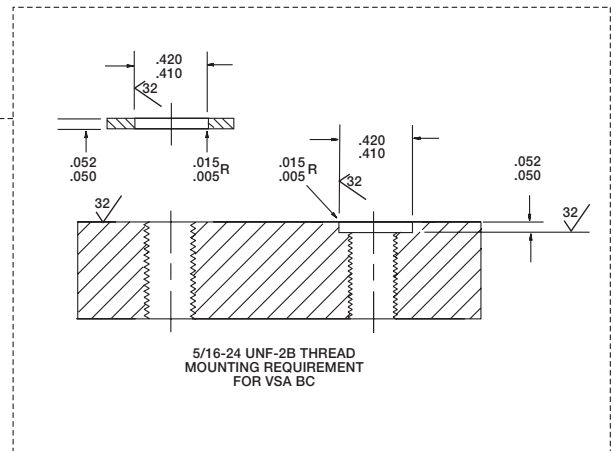
Contacts: Copper Alloy, Hard Gold Plated per ASTM-B-488

Pressure Rating, Mated: up to 20,000 psi

**VSA-BC;** The smallest standard connector in our non-metallic series, features an o-ring in the thread relief area. Available in single contact.

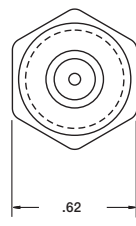
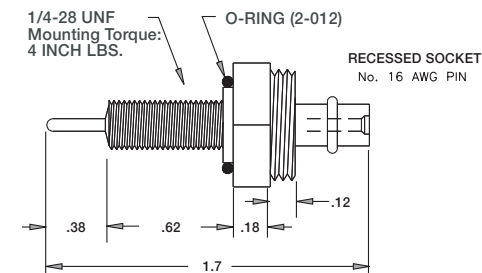


VSA-BC  
1#16



VSA-BCL  
1#16

**VSA-BCL;** Miniature single contact connectors which feature a locking sleeve provision. The o-ring is located on a step under the hex and seals by flush mounting to the bulkhead.



VSB-BCL  
1#16

**VSB-BCL;** This is a miniature connector body very similar to the VSA-BCL, but utilizes a smaller installation thread. The small thread size requires care in installation to avoid damaging or cracking. The o-ring is located on a stop under the hex and seals by flush mounting to the bulkhead.

Note: Torque values referenced in this literature assume installation into dry metal threads. Please contact the factory for recommendations.